

# Data Integration Reimagined!

## NEXT GENERATION TECHNOLOGY



MODULAR AND INTEROPERABLE



POINT-AND-CLICK CONFIGURATION



BLAZING FAST TRANSFER SPEEDS



MONITORING AND CONTROL

## KEY FEATURES

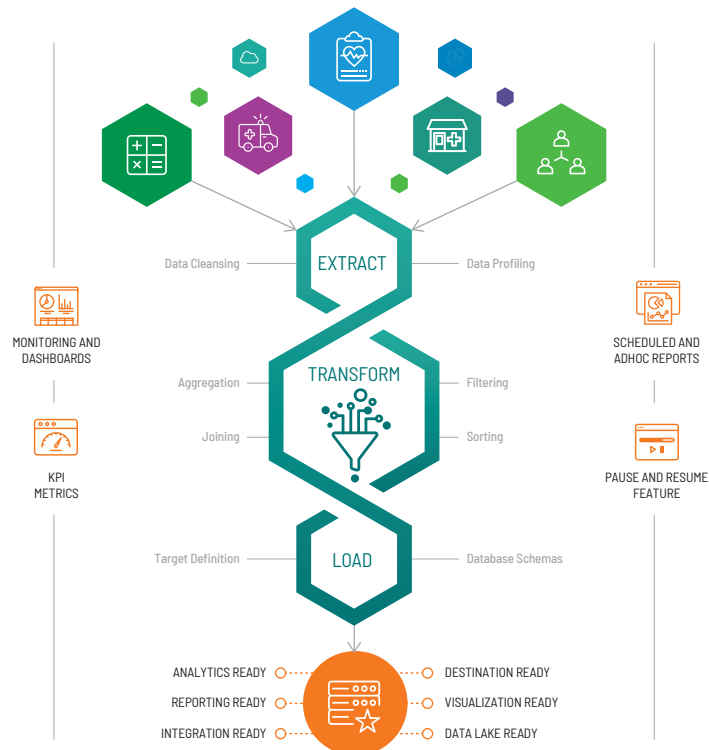
- COTS-based Multitenant SAAS Solution
- Integrates with Multiple Data Sources
- Syncs with any Data Warehouse or Database
- Efficient UI based SQL editor
- Track Extraction/Load Status in Real-Time
- On Premise, Cloud and Hybrid Deployment
- UI-based Mapping of Source to Destination
- Terminate, Pause, and Resume Process
- Real-time Dashboards and Forecasting
- User Group, Role, Role Group Authorization

DataPort is a lightweight, configurable, and secure enterprise ETL platform, that can help you break down silos and set the path for rich data discovery and business excellence.

## ANY SOURCE, ANY DESTINATION

DataPort's ETL automation features makes it easy to collect data from multiple sources, move the data to a preferred data warehouse, and build reports on the go. DataPort's on-premise and cloud-based deployment options, customizable workflows, real-time data pipeline status, tracking, governance, analytics, and shallow learning curve - enable businesses to make faster and accurate decisions, and gain deep business insights for a competitive edge while meeting compliance standards.

## Integration Ecosystem



## DATA MANAGEMENT CAPABILITIES

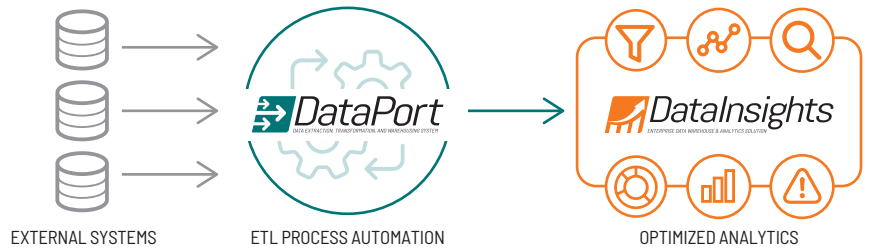
- Cloud Migration
- Data Mining
- Data Virtualization
- Master Data Management
- Data Cleansing
- BI and Analytics
- Data Integration
- Data Mapping
- Data Migration
- Data Pipeline
- Data Transformation
- Data Warehousing
- Database Replication
- Marketing Data Integration
- Real-time Data Ingestion

## DATAPORT ADVANTAGES

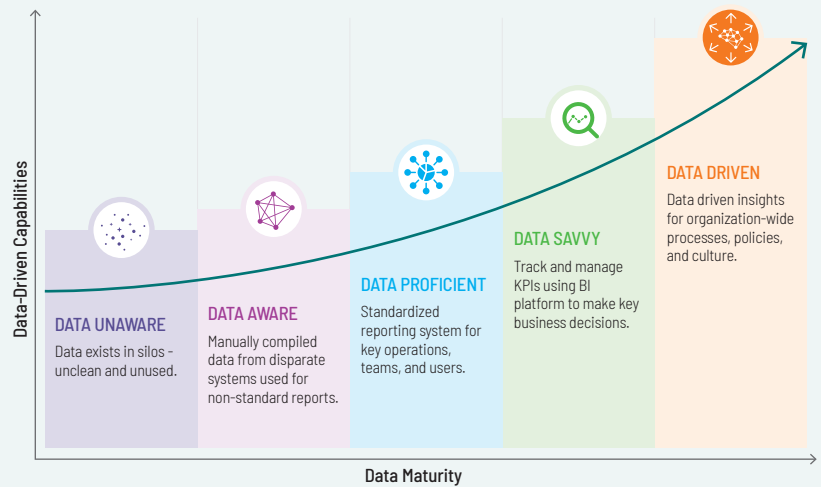
- 1 Increased Throughput
- 2 Visual Flow
- 3 Structured System Design
- 4 Impact Analysis
- 5 Advanced Data Profiling and Cleansing
- 6 High Performance
- 7 Operational Resilience
- 8 Data Quality
- 9 Ease-of-use
- 10 Crucial Metadata
- 11 Highly Secure
- 12 Improved ROI

## ANALYTICS MATURITY

DataPort leverages CITI's very own enterprise data warehouse and analytics solution **DataInsights**. DataPort seamlessly plugs into DataInsights resulting in time and cost savings, while delivering quality results with little or no support from your IT department, enhancing the confidence of stakeholders in its accuracy and consistency. DataInsights can help your organization attain analytics maturity by empowering you to identify risks, unravel patterns, make informed business decisions, and improve customer experience.



### Move up the data maturity curve



The ultimate goal for all organizations should be to embed data into all business processes. No data. No decisions.

## Maximize the value of your data

Call us today at (703) 483-4300 for a free demo and consultation by our experts



7799 Leesburg Pike, Suite 500 North Falls Church, VA 22043

(703) 483-4300

www.citi-us.com | sales@citi-us.com

**About CITI:** Established in 1996, headquartered in Falls Church, Virginia, and has offices located throughout the United States, Europe, South Asia, and Canada. CITI is a diverse organization filled with talented IT and certified business professionals. We are ISO 9001:2015, ISO 20000-1:2011, ISO 27001:2013 and CMMI-DEV Maturity Level 4 certified. As a Microsoft Gold Partner, we specialize in the creative use of agile methods and emerging technologies. CITI Healthcare's solutions and services enable organizations to enhance operational efficiencies and streamline processes while meeting regulatory compliance. CITI's team of healthcare and IT experts empower providers and payers to deliver quality, connected, patient-centric care more efficiently and cost effectively.